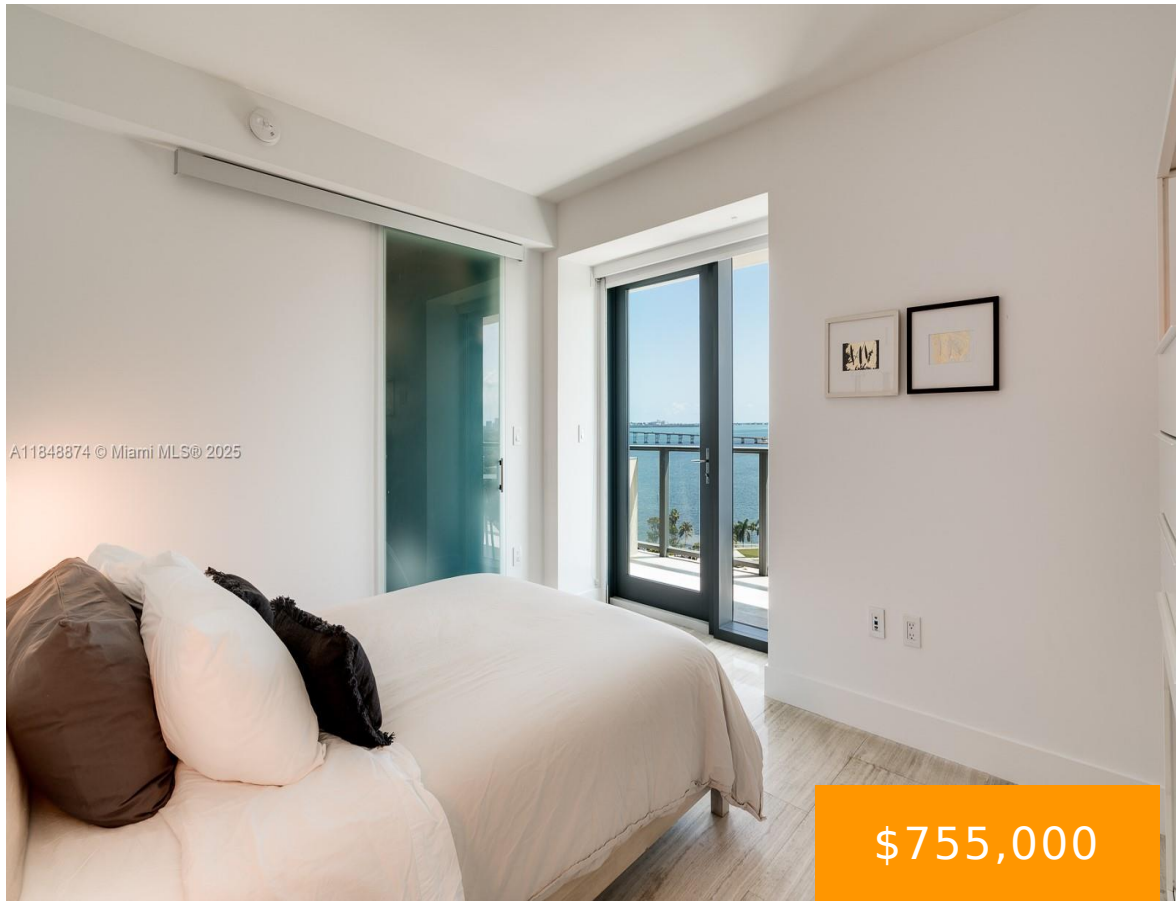


1451 BRICKELL AVE 1404

https://echobrickellave.com

Miami, 1404, 1451,  
Brickell Ave, Miami,  
FL, 33131



ECHO BRICKELL CONDO UNIT 1404 UNDIV 0.318% INT IN COMMON ELEMENTS  
OFF REC 28880-4047 Zen + Privacy: Indulge yourself in this tastefully  
furnished corner unit at Echo Brickell with views spanning from the Biscayne  
Bay to the tree canopies along S Miami Ave. Stunning sunsets await, as  
viewed through 1404's floor-to-ceiling windows throughout its entire [...]

- 1 bed
- 2 baths
- Condominium
- Residential
- Active
- 748 sq ft

Basics



**Category:** Residential

**Status:** Active

**Bathrooms:** 2 baths

**Floors:** 57 floors

**Year built:** 2017

**Subdivision Name:** ECHO BRICKELL CONDO

**Type:** Condominium

**Bedrooms:** 1 bed

**Half baths:** 1 half bath

**Area:** 748 sq ft

**View:** Bay,City

**County:** Miami-Dade

## Building Details

**Architectural Style:** HighRise

**Garage Spaces:** 1

**Covered Spaces:** 1

**Floor covering:** Marble

## Amenities & Features

**Parking Features:** OneSpace,Valet

**Patio & Porch Features:** Balcony,Open

**Utilities:** CableAvailable

**Cooling:** CentralAir

**Furnished:** Furnished

**Interior Features:**  
BuiltInFeatures,BedroomOnMainLevel,WalkInClosets

**Security Features:** ElevatorSecured,KeyCardEntry,LobbySecured

**Association Amenities:** FitnessCenter,Pool,Trash,Elevators

**Window Features:** Blinds,ImpactGlass

**Exterior Features:** Balcony,Barbecue,SecurityHighImpactDoors

**Heating:** Central

**Appliances:**  
BuiltInOven,Dryer,Dishwasher,ElectricRange,Microwave,Refrigerator,Washer

## Expenses, Fees & Taxes

**Association Fee:** \$1,780

**Tax Annual Amount:** \$10,499

**Tax Year:** 2024

## Miscellaneous

**Association Fee Frequency:** Monthly

**Listing Terms:** Cash,Conventional

**List Office Name:** Compass Florida, LLC

