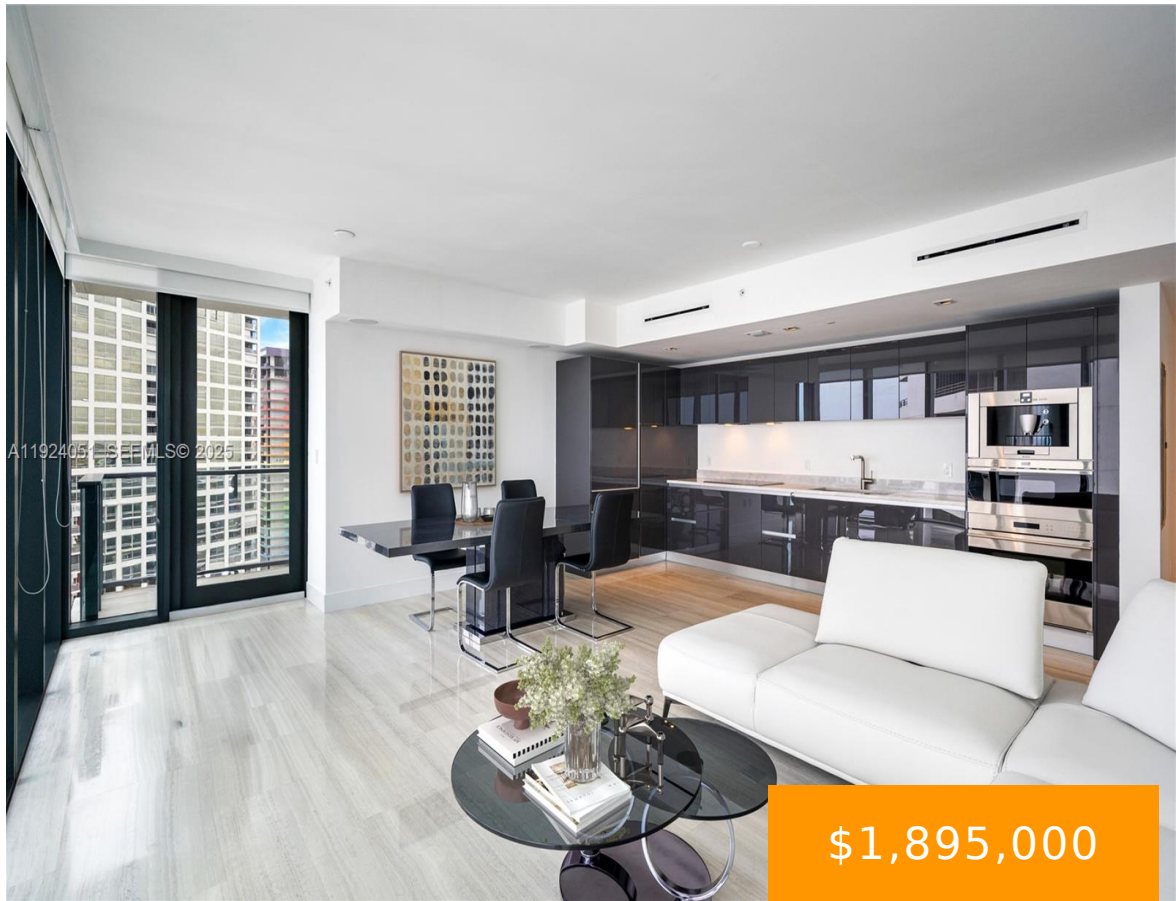


1451 BRICKELL AVE 2003

https://echobrickellave.com

Miami, 2003, 1451,
Brickell Ave, Miami,
FL, 33131



\$1,895,000

ECHO BRICKELL CONDO UNIT 2003 UNDIV 0.484% INT IN COMMON ELEMENTS
OFF REC 28880-4047 Experience unrivaled luxury and breathtaking panoramic views in this turnkey, never-lived-in 2BD/2.5BA corner residence at Echo Brickell. One of the most sought-after lines in the entire building! The coveted 03 line offers an exceptional layout with two oversized terraces (including one [...])



- 2 beds
- 3 baths
- Condominium
- Residential
- Active
- 1262 sq ft

Basics



Category: Residential

Status: Active

Bathrooms: 3 baths

Floors: 57 floors

Year built: 2017

Subdivision Name: ECHO BRICKELL CONDO

Type: Condominium

Bedrooms: 2 beds

Half baths: 1 half bath

Area: 1262 sq ft

View: Bay,City

County: Miami-Dade

Building Details

Architectural Style: HighRise

Covered Spaces: 2

Floor covering: Marble

Construction Materials: Block

Garage Spaces: 2

Amenities & Features

Pool Features: Association

Security Features: ElevatorSecured,LobbySecured,SecurityGuard,SmokeDetectors

Association Amenities: Elevators,FitnessCenter,Pool,SpaHotTub,Trash

Window Features: ImpactGlass

Exterior Features: Balcony,Barbecue,SecurityHighImpactDoors

Interior Features: BuiltInFeatures,BedroomOnMainLevel,ClosetCabinetry,DualSinks,LivingDiningRoom,SplitBedrooms,SeparateShower,WalkInClosets

Parking Features: Attached,Garage,TwoOrMoreSpaces,Valet

Patio & Porch Features: Balcony,Open

Waterfront Features: Bayfront

Cooling: CentralAir,Electric

Heating: Central,Electric

Appliances: Dryer,Dishwasher,ElectricRange,Disposal,IceMaker,Microwave,Refrigerator,SelfCleaningOven,Washer

Expenses, Fees & Taxes

Association Fee: \$2,697

Tax Year: 2025

Tax Annual Amount: \$18,703

Miscellaneous

Association Fee Frequency: Monthly

List Office Name: Compass Florida, LLC

Listing Terms: Cash,Conventional

