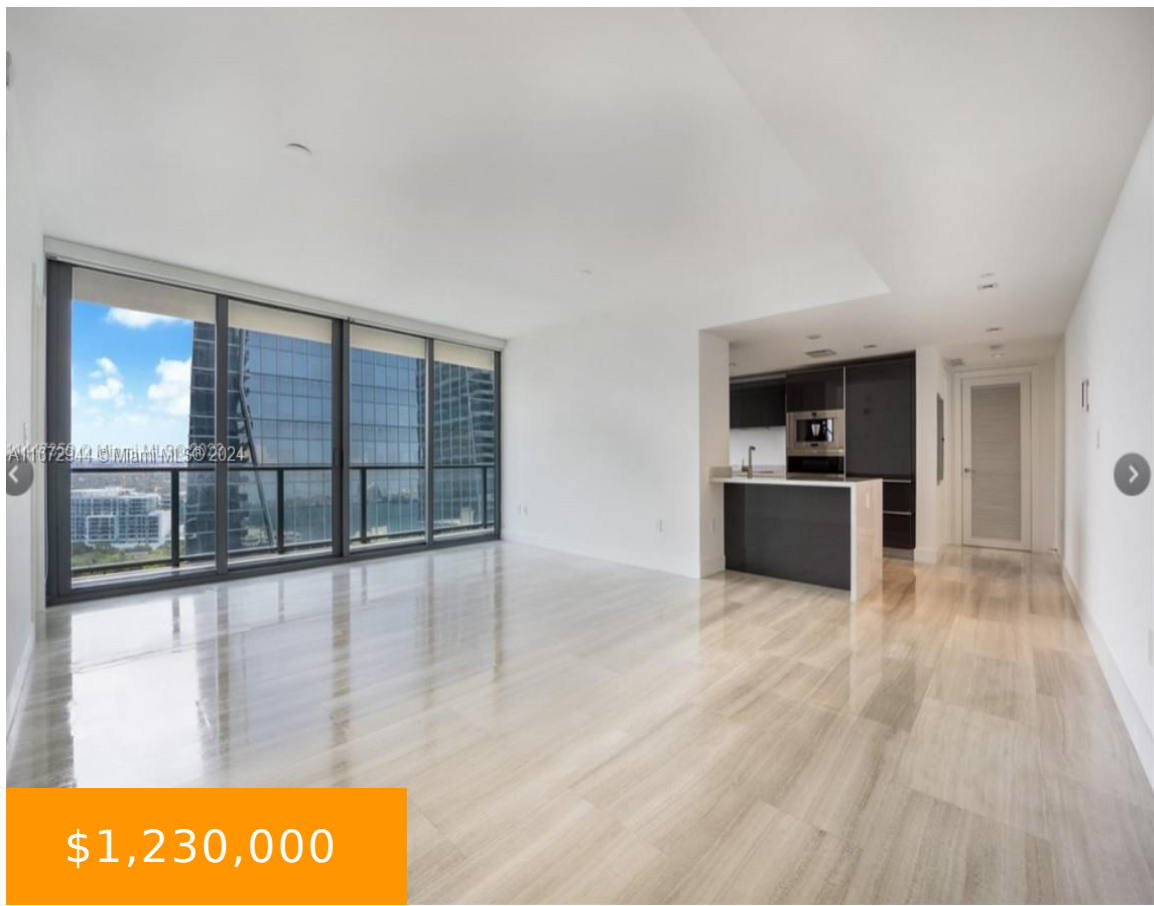


2305, 1451, BRICKELL AVE, MIAMI, FL, 33131

<https://echobrickellave.com>



\$1,230,000



ECHO BRICKELL CONDO UNIT 2305 UNDIV 0.490% INT IN COMMON ELEMENTS OFF REC 28880-4047 Experience breathtaking panoramic skyline views and water reflections from the 23rd floor 2 bedroom residence, complete with an expansive balcony featuring a summer kitchen that is easily accessible from all rooms. This lux residence showcases marble flooring, custom Italian glass cabinetry, [...]

- 2 beds
- 2 baths
- Condominium
- Residential
- Active
- 1153 sq ft

Basics



Category: Residential

Status: Active

Bathrooms: 2 baths

Floors: 57 floors

Year built: 2017

Subdivision Name: ECHO BRICKELL CONDO

Type: Condominium

Bedrooms: 2 beds

Half baths: 0 half baths

Area: 1153 sq ft

View: City

County: Miami-Dade

Building Details

Construction Materials: Block

Garage Spaces: 2

Covered Spaces: 2

Floor covering: Marble

Amenities & Features

Pool Features: Association

Security Features:

DoorMan,ElevatorSecured,FireAlarm,SecuredGarageParking,Intercom,PhoneEntry,SecurityGuard,FireSprinklerSystem

Association Amenities: Clubhouse,Elevators,Other,Pool

Exterior Features: Balcony,Barbecue,SecurityHighImpactDoors

Interior Features: BedroomOnMainLevel,Elevator,Bar

Parking Features:

Attached,Garage,TwoOrMoreSpaces

Patio & Porch Features: Balcony,Open

Cooling: CentralAir

Heating: Central

Appliances:

Dryer,Dishwasher,Disposal,Refrigerator,TrashCompactor

Expenses, Fees & Taxes

Association Fee: \$2,452

Tax Year: 2023

Tax Annual Amount: \$14,526

Miscellaneous

Association Fee Frequency: Monthly **List Office Name:** Destaca

Listing Terms: Cash,Conventional

