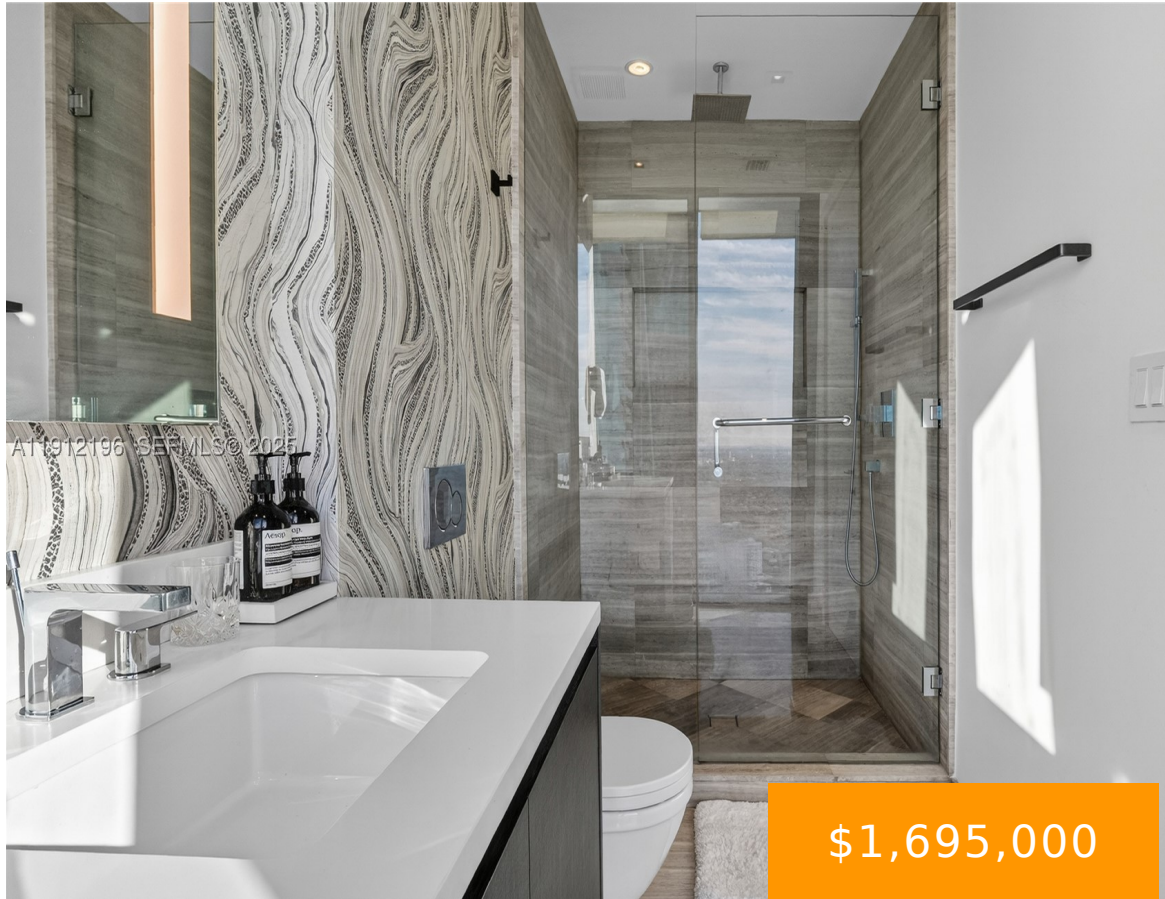
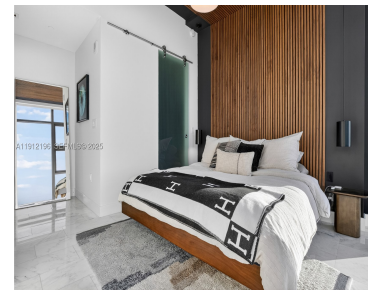


Miami, 4304, 1451,
Brickell Ave, Miami,
FL, 33131

1451 BRICKELL AVE 4304

<https://echobrickellave.com>



\$1,695,000

ECHO BRICKELL CONDO UNIT 4304 UNDIV 0.479% INT IN COMMON ELEMENTS
OFF REC 28880-4047 Experience unparalleled luxury at The Echo, one of
Brickell's most prestigious boutique buildings. This corner residence offers
breathtaking views of Brickell Avenue and Biscayne Bay through floor-to-
ceiling impact windows. Features include automated bedroom blackout
shades, marble floors, top-of-the-line Wolf and Sub-Zero [...]

- 2 beds
- 3 baths
- Condominium
- Residential
- Active
- 1127 sq ft

Basics



Category: Residential

Status: Active

Bathrooms: 3 baths

Floors: 57 floors

Year built: 2017

Subdivision Name: ECHO BRICKELL CONDO

Type: Condominium

Bedrooms: 2 beds

Half baths: 1 half bath

Area: 1127 sq ft

View: Bay,Water

County: Miami-Dade

Building Details

Architectural Style: HighRise

Covered Spaces: 2

Floor covering: Marble

Construction Materials: Block

Garage Spaces: 2

Amenities & Features

Pool Features: Association

Security Features: DoorMan,ElevatorSecured,KeyCardEntry,LobbySecured,PhoneEntry,FireSprinklerSystem

Association Amenities: FitnessCenter,Other,Pool,SpaHotTub,Elevators

Cooling: CentralAir

Heating: Central

Appliances:

BuiltInOven,Dryer,Dishwasher,ElectricRange,Disposal,Microwave,Other,Refrigerator,SelfCleaningOven,Washer

Parking Features: Attached,Garage,TwoOrMoreSpaces,Valet

Patio & Porch Features: Balcony,Open

Window Features: Blinds,ImpactGlass

Exterior Features: Balcony,SecurityHighImpactDoors

Interior Features:

BedroomOnMainLevel,ClosetCabinetry,EntranceFoyer,KitchenIsland,Pantry,TubShower,WalkInClosets,Elevator,Bar

Expenses, Fees & Taxes

Association Fee: \$2,750

Tax Year: 2025

Tax Annual Amount: \$21,716

Miscellaneous

Association Fee Frequency: Monthly

List Office Name: American Prime Properties Inc

Listing Terms: Cash,Conventional

