

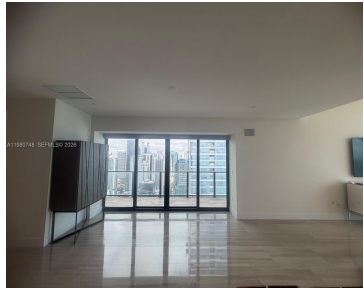
1451 BRICKELL AVE 4501

<https://echobrickellave.com>

Miami, 4501, 1451, Brickell Ave, Miami, FL, 33131



\$18,500



ECHO BRICKELL CONDO UNIT 4501 UNDIV 0.799% INT IN COMMON ELEMENTS OFF REC 28880-4047 Lower Penthouse at Echo Brickell offering spectacular panoramic views of Key Biscayne, Biscayne Bay, the ocean, and Downtown Miami. This stunning residence features 3 bedrooms and 3.5 bathrooms, elegant marble flooring, Italian cabinetry, and a gourmet kitchen equipped with premium Wolf [...]

- 3 beds
- 4 baths
- Condominium
- ResidentialLease
- Active
- 1878 sq ft

Basics



Category: ResidentialLease

Status: Active

Bathrooms: 4 baths

Area: 1878 sq ft

View: Bay,Ocean

County: Miami-Dade

Type: Condominium

Bedrooms: 3 beds

Half baths: 1 half bath

Year built: 2017

Subdivision Name: ECHO BRICKELL CONDO

Lease Term: TwelveMonths

Building Details

Architectural Style: HighRise

Construction Materials: Block

Garage Spaces: 3

Sewer: PublicSewer

Covered Spaces: 3

Floor covering: Marble

Amenities & Features

Pool Features:

AboveGround,Pool,Community

Spa Features: HotTub

Cooling: CentralAir

Heating: Central

Parking Features: Attached,Covered,Garage,Valet

Waterfront Features: Bayfront,OceanFront

Furnished: Partially

Interior Features:

BreakfastArea,KitchenDiningCombo

Miscellaneous

List Office Name:

Interinvestments Realty,
Inc.

Community Features:

BarLounge,Clubhouse,Fitness,GameRoom,Other,Pool

Direction Faces: East

Rent Includes: Internet,PestControl,Sewer,Water

