

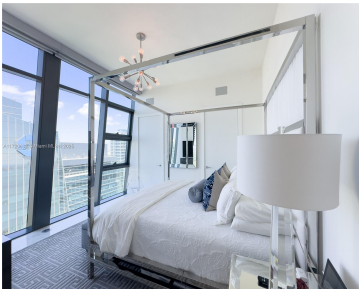
1451 BRICKELL AVE 4503

<https://echobrickellave.com>

FL, Miami



ECHO BRICKELL CONDO EAST BRICKELL TOWER SUB PB 117-86 Stunning panoramic bay and city views from this corner unit featuring 3 beds, 3.5 baths, terrace with a summer kitchen. Interior highlights include marble flooring, Italian glass cabinetry, top of the line appliances, and smart home technology. Amenities: valet, infinity pool, gym, hot tubs. Unit currently [...]



- 3 beds
- 4 baths
- Condominium
- Residential
- Active
- 2122 sq ft

Basics



Category: Residential

Status: Active

Bathrooms: 4 baths

Floors: 57 floors

Year built: 2017

Subdivision Name: ECHO BRICKELL CONDO

Type: Condominium

Bedrooms: 3 beds

Half baths: 1 half bath

Area: 2122 sq ft

View: Bay,Ocean

County: Miami-Dade

Building Details

Construction Materials: Block

Garage Spaces: 3

Covered Spaces: 3

Floor covering: Marble

Amenities & Features

Parking Features: Attached,Covered,Garage,Valet

Patio & Porch Features: Balcony,Open

Utilities: CableAvailable

Cooling: CentralAir

Furnished: Unfurnished

Interior Features: BedroomOnMainLevel,ClosetCabinetry,KitchenIsland,LivingDiningRoom,Elevator,Bar

Security Features: ElevatorSecured,LobbySecured,SecurityGuard,SmokeDetectors

Association Amenities: FitnessCenter,Sauna,Elevators

Window Features: Blinds,ImpactGlass

Exterior Features: Balcony,Barbecue,SecurityHighImpactDoors

Heating: Electric

Appliances: BuiltInOven,Dryer,Dishwasher,ElectricRange,Disposal,IceMaker,Microwave,Other,Refrigerator,TrashCompactor,Washer

Expenses, Fees & Taxes

Association Fee: \$4,648

Tax Year: 2024

Tax Annual Amount: \$39,890

Miscellaneous

Association Fee Frequency: Monthly

List Office Name: HR 19 Realty LLC

Listing Terms: Cash,Conventional

Direction Faces: East

