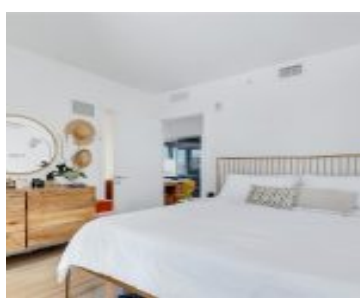


904, 1451, BRICKELL AVE, MIAMI, FL, 33131

<https://echobrickellave.com>



ECHO BRICKELL CONDO UNIT 904 UNDIV 0.293% INT IN COMMON ELEMENTS OFF REC 28880-4047 Exceptional 1 bdrm/1.5 bath condo in the unmatched, Echo building on Brickell Avenue. This truly exclusive, gorgeous corner unit boasts a spectacular 1,000 sq ft terrace with summer kitchen and endless, stunning views of Biscayne Bay and the Brickell Skyline. The [...]

- 1 bed
- 2 baths
- Condominium
- Residential
- Active
- 690 sq ft

Basics



Category: Residential

Status: Active

Bathrooms: 2 baths

Floors: 57 floors

Year built: 2017

Subdivision Name: ECHO BRICKELL CONDO

Type: Condominium

Bedrooms: 1 bed

Half baths: 1 half bath

Area: 690 sq ft

View: City,Water

County: Miami-Dade

Building Details

Architectural Style: HighRise

Covered Spaces: 1

Floor covering: Tile

Construction Materials: Block

Garage Spaces: 1

Amenities & Features

Pool Features: Association

Security Features: DoorMan,ElevatorSecured,LobbySecured

Association Amenities: Elevators,FitnessCenter,Pool

Window Features: Blinds,Sliding,ImpactGlass

Exterior Features: Balcony,SecurityHighImpactDoors

Interior Features:

BedroomOnMainLevel,ClosetCabinetry,EntranceFoyer,LivingDiningRoom,MainLivingAreaEntryLevel,TubShower,Bar

Parking Features: Attached,Garage,OneSpace,Valet

Patio & Porch Features: Balcony,Open

Utilities: CableAvailable

Cooling: CentralAir,Electric

Heating: Central,Electric

Appliances:

BuiltInOven,Dryer,Dishwasher,ElectricRange,Microwave,Refrigerator,Washer

Nearby Schools

Middle Or Junior School: Shenandoah

High School: Washington; Brooker T

Elementary School: Southside

Expenses, Fees & Taxes

Association Fee: \$1,619

Tax Year: 2023

Tax Annual Amount: \$11,018

Miscellaneous



Association Fee Frequency: Monthly

Listing Terms: Cash,Conventional

List Office Name: BHHS EWM Realty

Direction Faces: South

